

Ceramic Transducer Design Co.,Ltd

TEL: +886-3-3614555 FAX +886-3-3674408 E-mail: sale@ctdco.com.tw

Photo:



Standard type of this sensor:

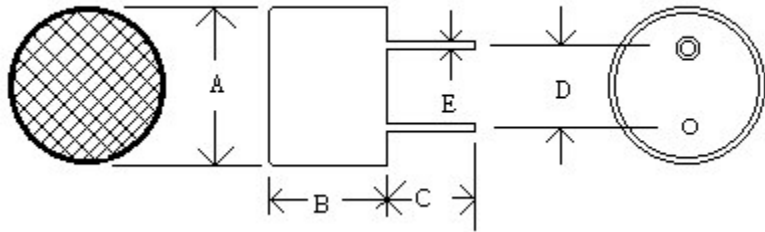
33T/R-16B	Black mesh with aluminum case
33T/R-16W	White mesh with aluminum case

Specification:

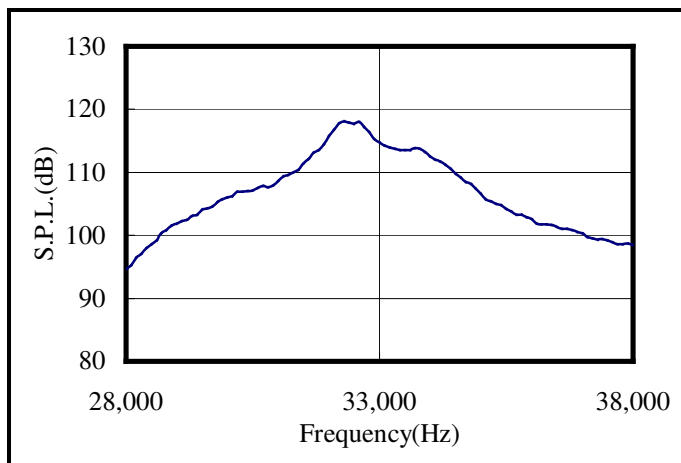
PARTS NUMBER	33T-16	33R-16
Center frequency (kHz)	32.768±1.0kHz	32.768±1.0kHz
Sound pressure level (0dB=0.0002 μ bar)	≥ 114dB	-----
Sensitivity (0dB vs 1V/ μ bar)	-----	≥ -69dB
Bandwidth (kHz)	3.0/100dB	3.0/-75dB
Beam angle -6dB	60°	
Driving voltage (RMS)	30V	
Working temperature (°C)	-30~80	

Dimension(33T/R-16BD):

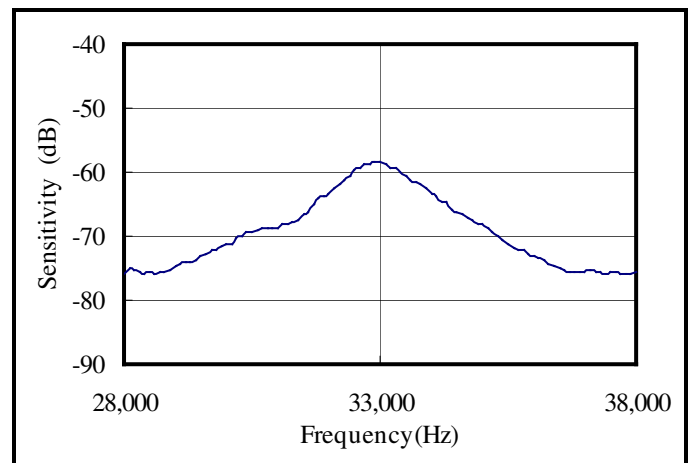
- A=16.1±0.3
- B=12.0±0.4
- C=11.5±1.0
- D=10.0±0.5
- E=1.0±0.1
- (UNIT: mm)



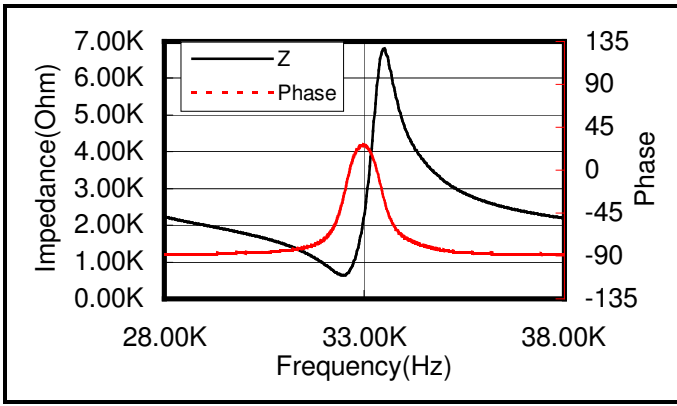
Sound Pressure Level



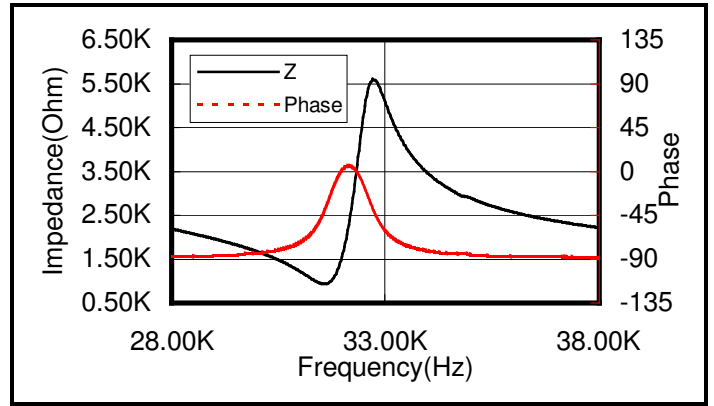
Sensitivity



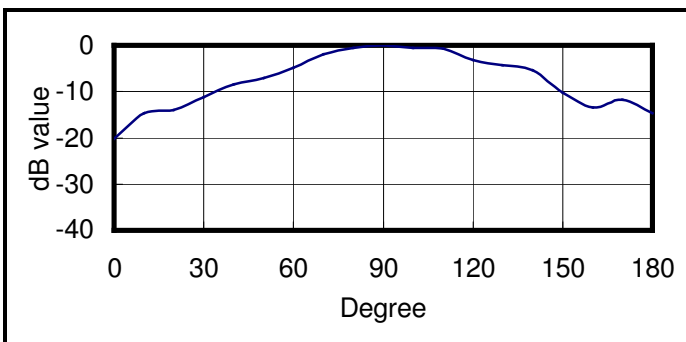
Transmitter impedance



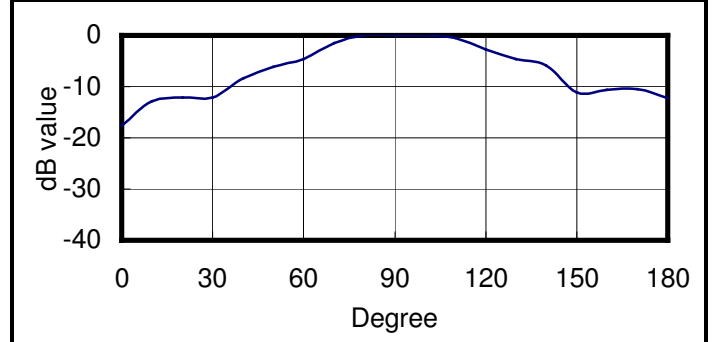
Receiver impedance



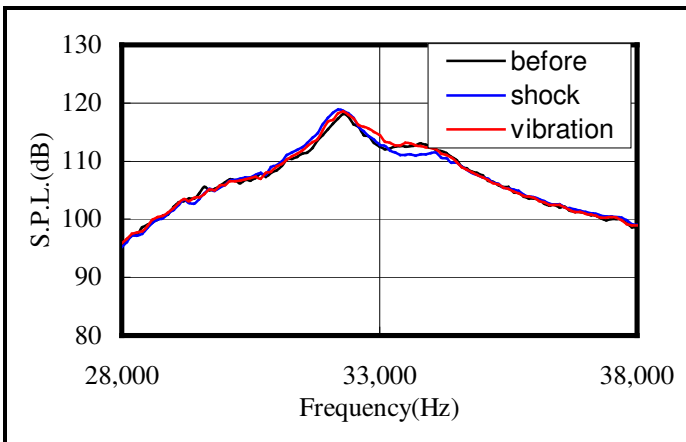
Beam angle of transmitter



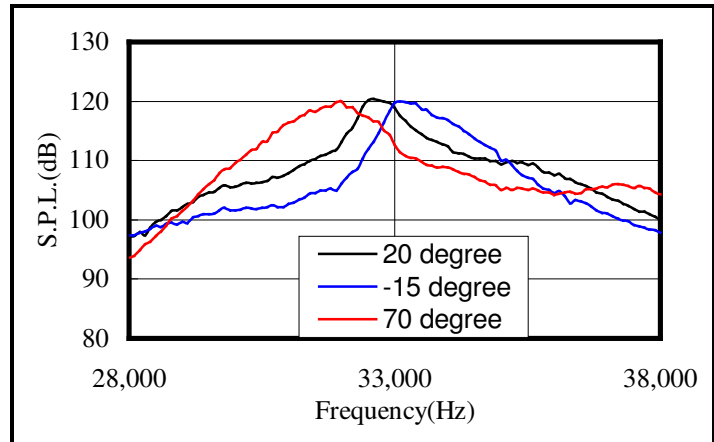
Beam angle of receiver



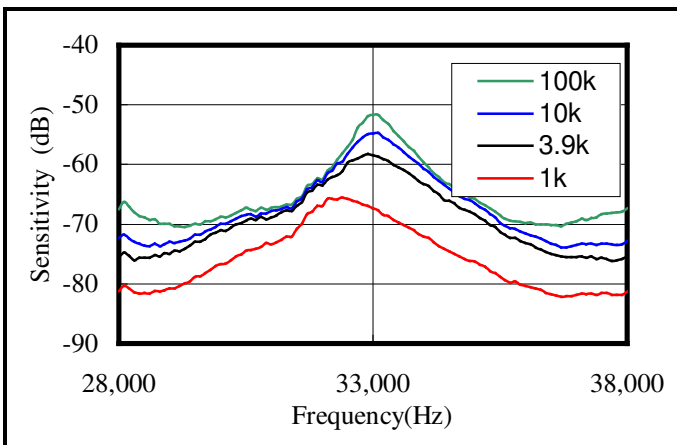
Environment test



Temperature test



Sensitivity change with load resistance



S.P.L. change with driving voltage

